

Using Smoothline GPS Files with TomTom

Note: TomTom use 2 different systems and you MUST use the correct system for your model



TomTom Home Models:

Go x00/10/30/40/50
Go720
XL series
One series

TomTom MyDrive

Go 500/ 600/ 800/ 1000/ 2000/ 5000/
6000
Live series
Via series

Smoothline provides GPS files for many events, simplifying navigation in recce and during the race. The GPS file is easy to install into GPS units (Garmin, Tom Tom etc).

Note: Garmin instructions are also available on the [resources page](#) of our website.



Instructions for TomTom Home Models

See Page 5 for TomTom MyDrive Instructions

1

Adding a "Smoothline GPS file" to your TomTom GPS:

1) (If not previously done) make a folder on your PC called "Smoothline TomTom files" to contain the files downloaded from our website.

2) Attach your TomTom GPS to your computer using a USB cable

Note: If the TomTom Home program appears please close it as we will not be using it.



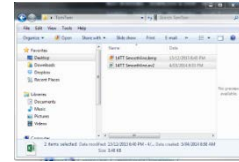
3) Download BOTH the .ov2 and .bmp "Smoothline GPS files" for the event you're entering from the events page of our website. Save these in the folder created in step 1.

(click on the TomTom logo)

TOMTOM 

4) Copy **BOTH** the .ov2 and .bmp file for the event

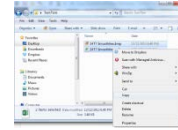
(To do this select both files by clicking on one with your mouse and while holding down the control key click on the other)



4) [In Windows] open the TomTom folder, then open the folder named "Australia" (or similar).

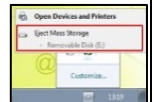
5) Paste the 2 files you copied in step 4 in this folder

(To do this right click in the destination folder and select "paste").



6) Eject TomTom from your PC

(As you would any remote drive)



7) On some models it may be necessary to enable the new GPS POI set.

To do this go to Change Preferences > Manage (or Maintain) POI > Enable / Disable POI and scroll down and select your new POI.

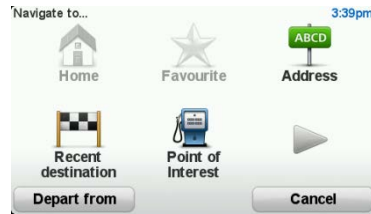
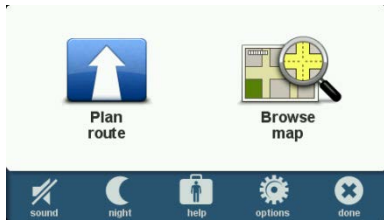
Smoothline GPS points are now available on your TomTom GPS!

2

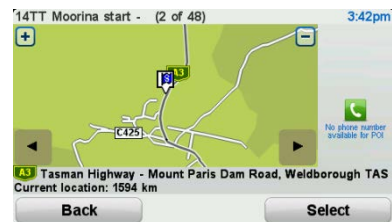
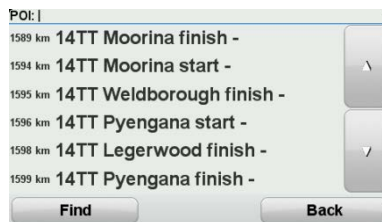
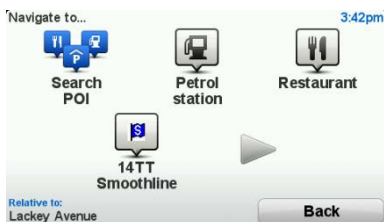
Using Smoothline GPS points:

GPS points are displayed in the TomTom device as "POI's". They are accessed through:

- 1) Tap the map screen to go to the Main Menu screen > Plan Route > Point of Interest > POI near you



- 2) Tap More > Choose the event > scroll down to the desired stage and tap on it > Select



Your TomTom GPS will now direct you to the start or finish point you have selected.



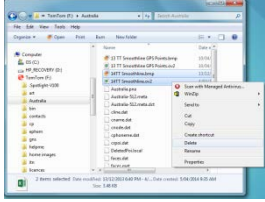
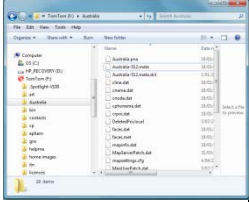

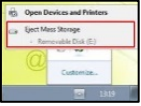


Note:

All start and finish points will appear on the map on your GPS screen. The course set by the GPS may traverse the stage in either direction and may cross other stages. Be mindful of any road closures or recce regulations.

3

Remove Smoothline GPS points (after the event):

| | | |
|---|---|---|
| <p>1) Attach your TomTom GPS to your computer using a USB cable.</p> |  |  |
| <p>2) [In Windows] open the TomTom folder, then open the folder named "Australia" (or similar).</p> | | |
| <p>3) <u>Carefully</u> click on ONLY the Smoothline files you wish to delete, the right-click and select "Delete" Note 1: To select multiple files click on one with your mouse and while holding down the control key click on each subsequent one) Note 2: Accidentally deleting other files may stop your GPS from recognising any roads. Note 3: If you do accidentally delete the incorrect file, the keyboard command "Control Z" may undo the error.</p> |  |  |
| <p>4) Eject TomTom from your PC (As you would any remote drive)</p> |  |  |

The selected Smoothline GPS points have now been removed from the TomTom.

See the following pages for TomTom MyDrive Instructions

Instructions for TomTom MyDrive Models

See Page 1 for TomTom Home Instructions

1

Adding a “Smoothline GPS file” to your TomTom GPS:

- 1) (If not previously done) install TomTom MyDriveConnect software.

Note: This program is supplied with your GPS and can be downloaded from

https://tomtom.com/en_au/mytomtom/getstarted/deviceselector.jsp

- 2) (If not previously done) make a folder on your PC called “Smoothline TomTom files” to contain the files downloaded from our website.

- 3) Download BOTH the .ov2 and .bmp “Smoothline GPS files” for the event you’re entering from the events page of our website. Save these in the folder created in step 2.

(click on the TomTom logo)

- 4) Attach your TomTom GPS to your computer using a USB cable

Note: If the TomTom Home program appears please close it as we will not be using it.

- 5) Open the TomTom MyDrive Connect program.

Note: It may have automatically opened when TomTom was connected to your PC.

- 6) [In MyDrive] click on:

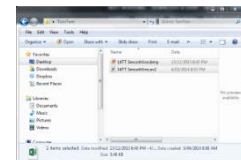
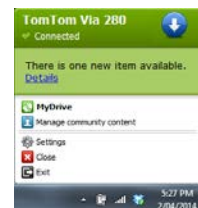
Manage Community Content > Add POI > Browse > [The folder you set up in step 2]

Note: POI is GPS-speak for Point-of-interest

- 7) Select BOTH the .ov2 and .bmp files for the event, then click “Install”

(To do this select both files by clicking on one with your mouse and while holding down the control key click on the other)

TOMTOM 



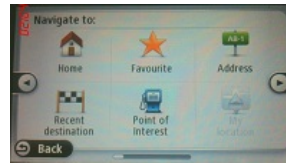
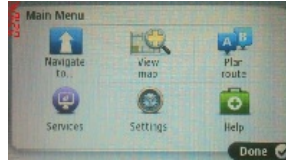
Smoothline GPS points are now available on your TomTom GPS!

2

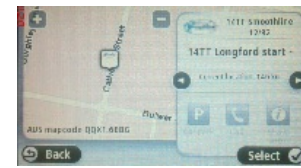
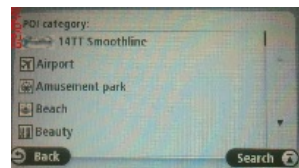
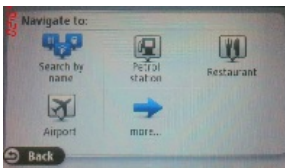
Using Smoothline GPS points:

GPS points are displayed in the TomTom device as “POI’s”. They are accessed through:

- 1) Tap the map screen to go to the Main Menu screen > Navigate To > Point of Interest > POI near you



- 2) Tap More > Choose the event > scroll down to the desired stage and tap on it > Select



Your TomTom GPS will now direct you to the start or finish point you have selected.



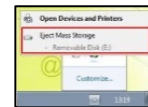
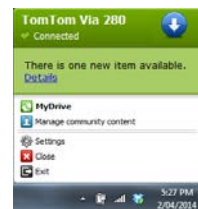
Note:

All start and finish points will appear on the map on your GPS screen. The course set by the GPS may traverse the stage in either direction and may cross other stages. Be mindful of any road closures or recce regulations.

3

Remove Smoothline GPS points (after the event):

- 1) Attach your TomTom GPS to your computer using a USB cable.
- 2) [In Windows] open the TomTom folder, then open the folder named "Australia" (or similar).
- 3) Open the TomTom MyDrive Connect program.
Note: It may have automatically opened when TomTom was connected to your PC.
- 4) [In MyDrive] click on Manage Community Content.
- 5) Click on the Set of POI's you wish to delete, then click "Remove".
- 6) [On TomTom Device] Once "Finished updating your device" shows on screen, click "OK".
- 7) Eject TomTom from your PC
(As you would any remote drive)



The selected Smoothline GPS points have now been removed from the TomTom.

As always, if you have any questions about using Smoothline GPS files please contact us via notes@smoothline.com.au or on 0402 256 395.